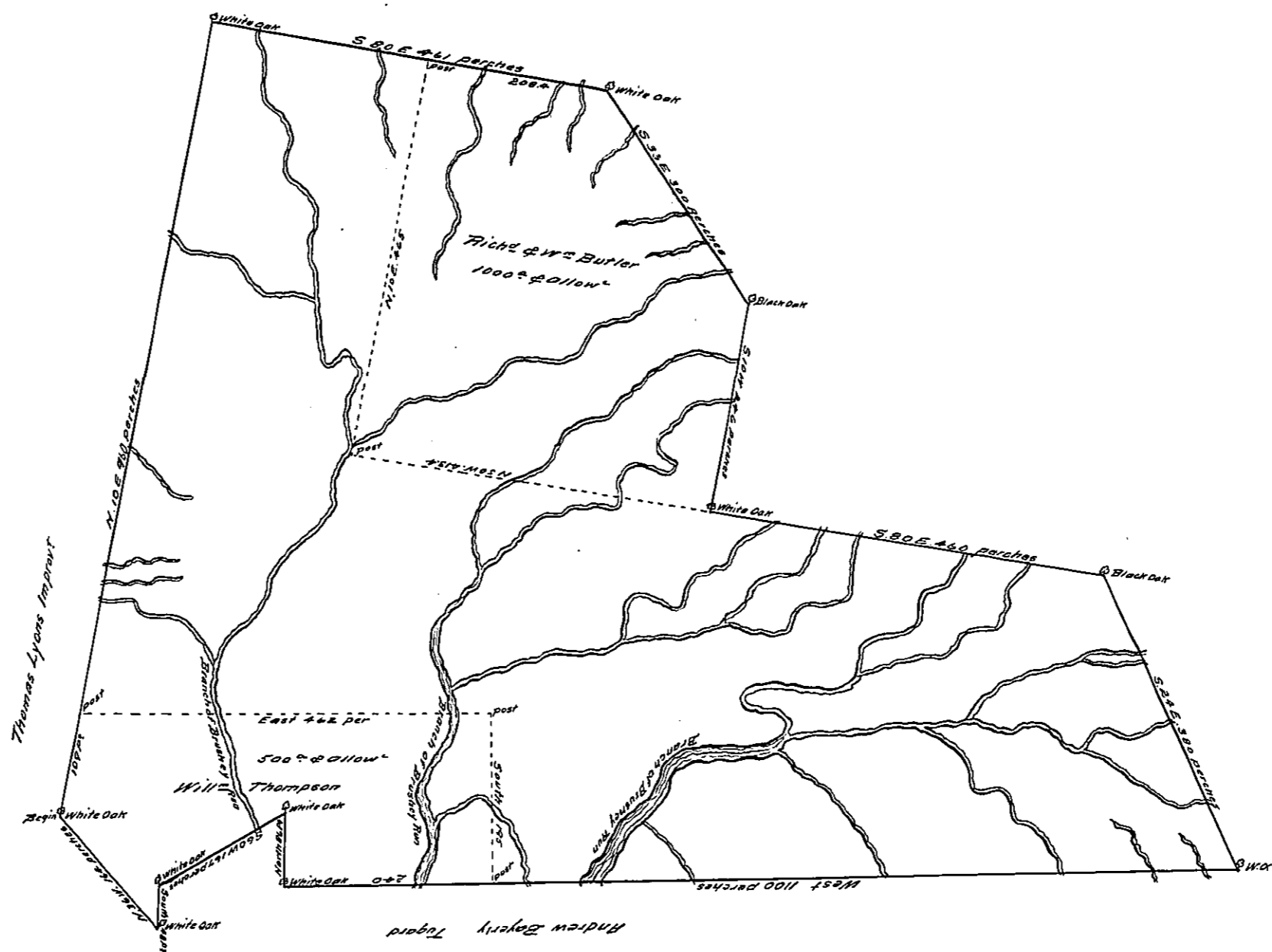


(Endorsement on back)

Proprietaries
 returned 4861 acres
 of
 "Denmark"

Returned for 19th May 1769

9



A Draught of a Tract of Land situate at Brushey Run in the County of Cumberland, Containing four Thousand eight Hundred and sixty one Acres and the allowance of six acres for Roads & Highways Surveyed the Twentieth Day of March 1769 for the Honorable Thomas Penn & Richard Penn Esq^s True and absolute Proprietaries of the Province of Pennsylvania, in pursuance of a Warrant bearing date the Twenty Second Day of Feb^r 1769.

W^m Thompson D^y Surv^r

To John Lukens Esq^r Surv^r Gen^l

In Testimony, That the above is a copy of the original remaining on file in the Department of Internal Affairs of Pennsylvania, made conformably to an Act of Assembly, approved the 16th day of February, 1833, I have hereunto set my Hand and caused the Seal of the said Department to be affixed at Harrisburg, the twenty-fifth day of September 1911.

Henry Howell,
 Secretary of Internal Affairs.